



BOLSOVER/ NORTH EAST

COMMUNITY UPDATE

MAY 2021

For further information or to add any additional information to the document please contact your Youth and Community Engagement Workers:

Name: Tina Eltringham

Contact details Tel: 07785381128

Email: tina.eltringham@derbyshire.gov.uk

We would like to acknowledge LINKS CVS have provided some of the material used in this document.

Contents:

- ♦ **Foodbanks**
- ♦ **Money and Finance/welfare Benefits**
- ♦ **Housing**
- ♦ **Mental Health/ Emotional well-being/ Staying active**
- ♦ **Domestic Abuse**
- ♦ **Sexual Abuse**
- ♦ **Parental Support**
- ♦ **Safeguarding**
- ♦ **Education**
- ♦ **Employment/ Training**
- ♦ **Community Support**
- ♦ **Addiction Support**
- ♦ **Support for Children and Young People**
- ♦ **Volunteering**
- ♦ **Any other Local info.**
- ♦ **Online Directories**

We would like to thank everyone for their support regarding the community updates, and we have amended the document with some of the feedback which we have received. This includes a toolbar on each page which will take you directly to the category that you are looking for.

Foodbanks: *Bolsover & NED*

Foodbanks

Money, Finance and Welfare Benefits

Housing

Mental Health, Emotional wellbeing, Staying active

Domestic Abuse

Sexual Abuse

Safeguarding

Parental Support

Education

Employment/ Training

Community Support

Addiction Support

Support for Children and Young People.

Volunteering

Any other Information

Online Directories

Market Share Stall

This food bank is for families and individuals who may be struggling and need supplies to get them through.

Every Tuesday morning from 8:30am

If you would like a free food parcel then please contact school on: **01246-823344** and leave a message or email: headteacher@brockley.derbyshire.sch.uk



Clay Cross Foodbank (Voucher required from referrer)

www.claycross.foodbank.org.uk

Tuesday, 1pm—2pm and Friday 1pm - 2pm Community of Christ Church, Thanet Street, Clay Cross.



Freedom Community Project

www.fcgroup.org.uk

Phone: 0300 302 0334 Email: info@fcgroup.org.uk



Rhubarb Farm

Fresh vegetable bags

£3 for Regular feed 2 x adults

£4 for Large 2 x adults 1 x child or Family



Referral to anita@rhubarbfarm.co.uk.

Grace Food Bank

www.gracefoodbanksheffield.org.uk

240, Low edges Road, Sheffield.

Referral - Email form on website.

GRACE FOOD BANK SHEFFIELD
helping give hope to those in need 

Phone: 07580516512 (Referrals)

Phone: 07964896283 (General enquiries)

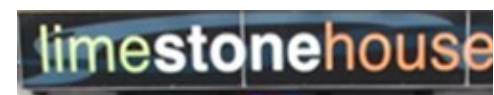
Limestone House

www.limestonehousecreswell.com

Food bank open Monday to Friday 10:00am – 2:00pm

Limestone House Foodbank service including Creswell, Hodt-horpe, Whitwell and Bakestone Moor.

Phone: 01909 724061



Foodbanks

Money, Finance and Welfare Benefits

Housing

Mental Health, Emotional wellbeing, Staying active

Domestic Abuse

Sexual Abuse

Safeguarding

Parental Support

Education

Employment/ Training

Community Support

Addiction Support

Support for Children and Young People.

Volunteering

Any other Information

Online Directories

Living Hope Food Bank – Holmewood

Abundant Life Christian Centre, Tibshelf Road, Holmewood

Open Wednesdays 12:00pm – 1:30pm

They offer a 24/7 emergency service.

Lead contact: Tokkie Haywood

Phone: 07940845805

Email: tokkie@uwclub.net

Mickley Infant School

Offering food to the community.

Collection from outside of the school.



Morton Food Hub

2 Main Road, Morton, Alfreton DE55 6GT

Open Wednesday 2:00pm—4:00pm, and Friday 10:00am – 12:00pm

The majority of hampers are delivered on Friday

Please note no longer open on Mondays

Phone: 01773874324 – Only during food bank opening hours

New Hope Food Bank (Referral from agency)

www.newhopefoodbank.org.uk

Norwood Industrial Estate, 3, Rotherham Close, Killamarsh.

Area's covered: Creswell, Clowne, Dronfield, Eckington, Killamarsh & Renishaw.

Phone: 07939950713 (All enquiries)

Email: jaquinehopecommunity@outlook.com



**New hope foodbank .
we are open Mon – Fri
9-5pm**

Shirebrook Christian Centre

www.thebrookcc.co.uk/foodbank.php

The Brook Community Church and Centre

Phone: 01623 744371 Mobile: 07726223557

Email: enquiries@brookcc.co.uk



Food Bank is open:
Friday 9-5pm

Community Pantry at Eckington

Customers can get 15 items for £3.50
see Facebook for more details.

Location: The Civic Centre
Market Street Eckington

Tel : 07968 623641

Email Jessica.popplewell-barker@rykneldhomes.org.uk



Foodbanks

Money, Finance and Welfare Benefits

Housing

Mental Health, Emotional wellbeing, Staying active

Domestic Abuse

Sexual Abuse

Safeguarding

Parental Support

Education

Employment/ Training

Community Support

Addiction Support

Support for Children and Young People.

Volunteering

Any other Information

Online Directories

South Normanton Foodbank (Voucher required from referrer)

www.southnormantonarea.foodbank.org.uk

St Michael and All Angels Church, Church Street, South Normanton.

Phone: 07999551691

Email: [in-fo@southnormantonarea.foodbank.org.uk](mailto:info@southnormantonarea.foodbank.org.uk)



Open Tuesdays
1:30pm – 2:30pm and
Friday 1:30pm –
2:30pm

Tibshelf Food Bank Allison Beckett Tel : 07739 113148
Every Sat 10 -12

Runs from Tibshelf Parish Sports Ground Pavilion Shetland Road.

The Food Bank is for residents of Tibshelf who need support because of financial difficulties.

(CUP) Community Unity Project

Creswell, Clowne, Whitwell, Hodthorpe, Barlborough

Tel: 07515 727876

www.communityunityproject.co.uk

Facebook : Community Unity Project



Tibshelf Infant & Nursery School

Food bank open Monday to Friday at start and end of school day

Term time only

www.tibshelf-inf.derbyshire.sch.uk

Phone:
01773 872571

Email : headteacher@tibshelf-inf.derbyshire.sch.uk



Foodbanks

Money, Finance and Welfare Benefits

Housing

Mental Health, Emotional wellbeing, Staying active

Domestic Abuse

Sexual Abuse

Safeguarding

Parental Support

Education

Employment/ Training

Community Support

Addiction Support

Support for Children and Young People.

Volunteering

Any other Information

Online Directories

Foodbanks:



Cash support for food redistribution during coronavirus outbreak

For more information visit the website

[Cash support for food redistribution during coronavirus outbreak - GOV.UK \(www.gov.uk\)](https://www.gov.uk/cash-support-for-food-redistribution-during-coronavirus-outbreak)



Trussell Trust

Website

enquiries@trusselltrust.org



Rural Action Derbyshire

Website

Phone: 01629 592970

They have an alphabetical list of all food banks.

If you would be interested in getting involved, please contact Jo Peck at j.peck@ruralactionderbyshire.org.uk



Universal Infant Free School Meals (UIFSM)

[Free school meals: guidance for schools and local authorities - GOV.UK \(www.gov.uk\)](https://www.gov.uk/free-school-meals)

Guidance about free school meals and transitional protection arrangements for them under Universal Credit.

To get your free meal please ask at your child's school.

Money, Finance and Welfare Benefits: *Bolsover & NED*

[Foodbanks](#)

[Money, Finance and Welfare Benefits](#)

[Housing](#)

[Mental Health, Emotional wellbeing, Staying active](#)

[Domestic Abuse](#)

[Sexual Abuse](#)

[Safeguarding](#)

[Parental Support](#)

[Education](#)

[Employment/ Training](#)

[Community Support](#)

[Addiction Support](#)

[Support for Children and Young People.](#)

[Volunteering](#)

[Any other Information](#)

[Online Directories](#)

their Adviceline can be accessed by phoning 0808 250 5702 for people living in the North East Derbyshire area and Bolsover Districts



Release

www.releaseonline.org.uk

Release is open for telephone help and support during the crisis with finances, budgeting and more.

Email: info@releaseonline.org.uk

Phone: 01773 306289 Text: 07932088331



DUWC SHIREBROOK

BIURO BĘDZIE OTWARTE OD PONIEDZIAŁKU 6 LIPCA

Have you lost your job struggling to pay rent or council tax

Need help filling in forms

WE ARE HERE TO HELP

54 Patchwork Row — Godziny Otwarcia

info@duwc.org.uk



Creswell - Limestone House

Every Thurs 1- 3.30

www.duwc.org.uk

[Foodbanks](#)

[Money, Finance and Welfare Benefits](#)

[Housing](#)

[Mental Health, Emotional wellbeing, Staying active](#)

[Domestic Abuse](#)

[Sexual Abuse](#)

[Safeguarding](#)

[Parental Support](#)

[Education](#)

[Employment/ Training](#)

[Community Support](#)

[Addiction Support](#)

[Support for Children and Young People.](#)

[Volunteering](#)

[Any other Information](#)

[Online Directories](#)

Money, Finance and Welfare Benefits:

Welfare Benefits



www.derbyshire.gov.uk/welfarebenefits

Help and advice with welfare benefits and tax credits.

Contact us

Email welfarebenefits@derbyshire.gov.uk or phone our benefits helpline, 11am-4.00pm, Monday, Tuesday, Thursday, Friday, on 01629 531535.

Derbyshire Discretionary Fund



[Derbyshire Discretionary Fund \(DDF\) - Derbyshire County Council](#)

Phone number : 01629533 399

The Derbyshire Discretionary Fund (DDF) can provide grants or emergency cash payments if you are in urgent need of financial help following a crisis or disaster.

Benefits during the Coronavirus



[Coronavirus support for employees, benefit claimants and businesses - GOV.UK \(www.gov.uk\)](#)

This link has the most up to date information for benefits, Universal Credits etc.

The Information is updated daily

Department for Work & Pensions

[Coronavirus support for employees, benefit claimants and businesses - GOV.UK \(www.gov.uk\)](#)



This website gives the most up to date government information for benefits, Universal Credit etc.

Covid-19 Cyber and Fraud Information Sheet



This advice has been collated by EMSOU and is intended for wider distribution within the East Midlands Region to raise awareness among businesses and the public.

[Website](#)

Foodbanks

Money, Finance and Welfare Benefits

Housing

Mental Health, Emotional wellbeing, Staying active

Domestic Abuse

Sexual Abuse

Safeguarding

Parental Support

Education

Employment/ Training

Community Support

Addiction Support

Support for Children and Young People.

Volunteering

Any other Information

Online Directories

Winter Pressure Single Contact point



Signposting, referral and advice service.
professional referrals only.

ASCH.CommunityResponseUnit@derbyshire.gov.uk

Call 01332 640000

Visit the website for more information.

[Winter Pressures - pathway for professionals - Derbyshire County Council](#)

CAP debt help

Free debt counselling.

Call free on—0800 328 0006

[Free debt counselling | Christians Against Poverty \(capuk.org\)](#)

christians
against
poverty

Citizens Advice

Money Advice, Appointments can be booked through the advice line.

Call FREE Monday to Friday 9am-4pm —0808 2787 954

[Citizens Advice Derbyshire Districts \(ddcab.org.uk\)](http://ddcab.org.uk)



Family Fund

Helping Disabled Children.

Grants available for families raising disabled or seriously ill young people aged 17 and under, contact through website to check if you qualify for a grant, for holidays, equipment, PC's etc..

[Family Fund](#)



Family Fund
Helping disabled children

Money Advice Service

The Money Advice Service gives guidance and help with how to manage your money better.

Online chat, whats app, call 0800138 7777

[Free and impartial money advice, set up by government - Money Advice Service](#)



Money Saving Expert

'Cutting your costs Fighting your corner'

[Coronavirus Self-Employed & Small Limited Company Help \(moneysavingexpert.com\)](#)



Foodbanks

Money, Finance and Welfare Benefits

Housing

Mental Health, Emotional wellbeing, Staying active

Domestic Abuse

Sexual Abuse

Safeguarding

Parental Support

Education

Employment/ Training

Community Support

Addiction Support

Support for Children and Young People.

Volunteering

Any other Information

Online Directories

Step change

Call—0800 138 1111

[StepChange Debt Charity - Free Expert Debt Advice.](#)



Contact the UK's leading debt charity to get expert debt advice and fee-free debt management to help you tackle your debts. Step Change Debt Charity.

Warmer Derby & Derbyshire helpline is open

The Warmer Derby & Derbyshire number is still available:

0800 677 1332



Charis Grants Ltd—Warm Home Discount Scheme

Telephone: 0330 555 9424

Monday to Friday, 9am to 5:30pm (closed on bank holidays)



[Warm Home Discount Scheme - GOV.UK \(www.gov.uk\)](#)

For more information about the scheme visit the website or Contact Charis Grants for more information about the scheme.

The Stop Loan Sharks Helpline Service **STOPLOANSHARKS**
Intervention . Support . Education

Ensuring that illegal money lenders (loan sharks) do not take advantage and profit from other people's hardship is fully operational during the COVID-19 pandemic.

Call—0300 555 2222, Text a report 07860022116

shark@stoploansharks.uk

[Home - Stop Loan Sharks](#)

Suspicious Email Reporting Service (SERS)

[Phishing: how to report to the NCSC - NCSC.GOV.UK](#)



If you receive an email that you think is suspicious, you can forward it to the NCSC at report@phishing.gov.uk and their automated programme will immediately test the validity of the site. Any sites found

[Foodbanks](#)

[Money, Finance and Welfare Benefits](#)

[Housing](#)

[Mental Health, Emotional wellbeing, Staying active](#)

[Domestic Abuse](#)

[Sexual Abuse](#)

[Safeguarding](#)

[Parental Support](#)

[Education](#)

[Employment/ Training](#)

[Community Support](#)

[Addiction Support](#)

[Support for Children and Young People.](#)

[Volunteering](#)

[Any other Information](#)

[Online Directories](#)

Digital MOT

[Welcome to your Digital MOT](#)
[\(saferderbyshire.gov.uk\)](http://saferderbyshire.gov.uk)



By answering a few simple questions, you can find out the most important steps you can take to protect your devices and avoid being a victim of cybercrime.

Money Sorted in D2N2

Visit the website for financial help in your area.



Main office 0115 9085134

Email info@moneysortedinn2d2.org

[Help where you live – Money Sorted in D2N2](#)

Action Fraud

Visit the website to see some simple steps you can take to protect yourself from fraud including Coronavirus-related scams.

Call—0300 123 2040

[Action Fraud](#)



Housing: *Bolsover & NED*

Foodbanks

Money, Finance and Welfare Benefits

Housing

Mental Health, Emotional wellbeing, Staying active

Domestic Abuse

Sexual Abuse

Safeguarding

Parental Support

Education

Employment/ Training

Community Support

Addiction Support

Support for Children and Young People.

Volunteering

Any other Information

Online Directories

Bolsover District Council

Many of the council services can be accessed through using the website forms which can be found at



www.bolsover.gov.uk

Phone: 01246 242424

Email: enquiries@bolsover.gov.uk

Rykneld Homes

www.rykneldholmes.org.uk

Online form available for enquiries

Phone: 01246 217670

Email: contactus@rykneldhomes.org.uk



[Foodbanks](#)

[Money, Finance and Welfare Benefits](#)

[Housing](#)

[Mental Health, Emotional wellbeing, Staying active](#)

[Domestic Abuse](#)

[Sexual Abuse](#)

[Safeguarding](#)

[Parental Support](#)

[Education](#)

[Employment/ Training](#)

[Community Support](#)

[Addiction Support](#)

[Support for Children and Young People.](#)

[Volunteering](#)

[Any other Information](#)

[Online Directories](#)

Housing:

Please contact your housing provider or mortgage lender (these details will be on any correspondence that you have received from your provider)



Morrisons Foundation – Covid 19 Homeless Support Fund



[Covid-19 \(morrisonsfoundation.com\)](https://www.morrisonsfoundation.com)

- Outreach and support to rough sleepers
- Delivery of services in hostels and shelters
- Information and advice



If you're struggling with finances and finding it difficult to pay your rent, it's important that you act as soon as possible to avoid becoming homeless.

[Preventing homelessness - Derbyshire County Council](#)

Step Up provides accommodation and support for 16-24 year olds in Derbyshire.

Contact framework on 0115 9986635
or 01298 73798 or
email stepup@frameworkha.org



Mental Health Emotional Wellbeing/ Staying Active: *Bolsover & NED*

[Foodbanks](#)

[Money, Finance and
Welfare Benefits](#)

[Housing](#)

[Mental Health,
Emotional wellbeing,
Staying active](#)

[Domestic Abuse](#)

[Sexual Abuse](#)

[Safeguarding](#)

[Parental Support](#)

[Education](#)

[Employment/ Training](#)

[Community Support](#)

[Addiction Support](#)

[Support for Children
and Young People.](#)

[Volunteering](#)

[Any other Information](#)

[Online Directories](#)

P4YP – Positive 4 Young People

www.p4yp.org.uk

Free 1-2-1 Phone Counselling KS3 & KS4

Wendy Majhen Mobile: 07909117442

Email: w.majhen@p4yp.org.uk



**Specialist Community Advisors –
CAMHS**

Bolsover – Sophie Tipple

CAMHS Duty Team

Phone: 0300 123 9164 Weekdays

9:00am – 5 :00pm



Water Wellbeing—Swim Session

£3.40 per a session. Friday's 1pm-2pm.

Sharley Park Leisure Centre, Market Street, Clay Cross,

01246 217277

Active Derbyshire is a local organisation
who promote physical activity across the
area

<https://www.activederbyshire.org.uk>

info@activederbyshire.org.uk



Mental Health Emotional Wellbeing/ Staying Active:

[Foodbanks](#)

[Money, Finance and
Welfare Benefits](#)

[Housing](#)

[Mental Health,
Emotional wellbeing,
Staying active](#)

[Domestic Abuse](#)

[Sexual Abuse](#)

[Safeguarding](#)

[Parental Support](#)

[Education](#)

[Employment/ Training](#)

[Community Support](#)

[Addiction Support](#)

[Support for Children
and Young People.](#)

[Volunteering](#)

[Any other Information](#)

[Online Directories](#)

Derbyshire Community
Response Unit



[Community response unit - Derbyshire County Council](#)

If you need help and have no friends or family you can call on, you can register to get help online:

Phone us on: 01629 535091. Our phone line opening hours are:

Monday to Friday from 9am to 5pm

Mental Health and Wellbeing
Support for Children, Young
People, Parents and Carers
during Covid-19



If you have any questions or concerns then please do not hesitate to contact us:

ddccg.enquiries@nhs.net

**NHS Derby and Derbyshire
Clinical Commissioning Group**

**Joined Up Care
Derbyshire**

[Covid-19 health and wellbeing resources - posters
in different languages :: Joined Up Care Derbyshire](#)

There are many resources available on the Joined up Care Derbyshire website: <https://joinedupcarederbyshire.co.uk/> which brings together information from Health across Derby and Derbyshire.

Every Mind Matters

a good resource site and section on 'Looking after children and young people during the coronavirus outbreak'



[Anxiety | Every Mind Matters | One You \(www.nhs.uk\)](#)

Foodbanks

Money, Finance and Welfare Benefits

Housing

Mental Health, Emotional wellbeing, Staying active

Domestic Abuse

Sexual Abuse

Safeguarding

Parental Support

Education

Employment/ Training

Community Support

Addiction Support

Support for Children and Young People.

Volunteering

Any other Information

Online Directories

Qwell

Qwell is a free online Mental Health and Wellbeing resource for parents and carers of young people under the age of 18



website

Available 365 days of the year via mobile, tablet and desktop devices from 12 noon to 10pm Monday-Friday and 6pm-10pm at weekends

Derby and Derbyshire: Emotional Health and Wellbeing.

Online toolkit .Sections for professional, parent carer and child /young person

[Derby & Derbyshire - Emotional Health & Wellbeing \(derbyandderbyshireemotionalhealthandwellbeing.uk\)](http://derbyandderbyshireemotionalhealthandwellbeing.uk)



Samaritans

Offering mental health support. can be contacted by telephone, letter, e-mail and mini-com. There's also a face-to-face service, available at their local branches. They are open 24 hours a day, every day of the year.



Samaritans of Derby

Healthwatch Derbyshire

In response to Covid-19 there is now a telephone support line for people looking to access health or care services.



Telephone—01773 880786

10am-3:30pm Mon– Fri

enquiries@healthwatchderbsyhire.co.uk

the Home Office has joined forces with charities including the NSPCC, Barnardo's and The Children's Society to launch a new campaign to protect victims of child abuse.

<https://www.childline.org.uk/somethings-not-right>



Derbyshire Recovery and Peer Support Service

[Derbyshire Recovery and Peer Support Service \(rethink.org\)](http://Derbyshire Recovery and Peer Support Service (rethink.org))

The Derbyshire Recovery and Peer Support Service provides person-centred mental health support across Derbyshire

Telephone: 01773 734989



[Foodbanks](#)

[Money, Finance and Welfare Benefits](#)

[Housing](#)

[Mental Health, Emotional wellbeing, Staying active](#)

[Domestic Abuse](#)

[Sexual Abuse](#)

[Safeguarding](#)

[Parental Support](#)

[Education](#)

[Employment/ Training](#)

[Community Support](#)

[Addiction Support](#)

[Support for Children and Young People.](#)

[Volunteering](#)

[Any other Information](#)

[Online Directories](#)

Men-Talk

mentalkmeeting@gmail.com

Men-Talk is all around the subject of improving men's mental health, raising awareness, removing the stigma and ultimately reducing male suicide.



Derbyshire County Community Trust

[Homepage](#) | [Derby County Community Trust](#)

Virtual FREE online sessions for all the family to stay active, involved in their wider community and online interactive challenges



Kooth

An online counselling and emotional well-being platform for children and young people, accessible through mobile, tablet and desktop and free at the point of use.



[Home - Kooth](#)

Online chat: Available

Action for Children

Daily tips and tricks on how to boost your well-being/ Feeling Good. Offering support around fostering, adoption and through resources.



[Action For Children](#) | [Children's charity](#) | [For safe and happy childhoods](#)

Child line

Information and advice on managing anxiety, bullying, internet safety, staying safe and a place you can speak to trained councillors.

childline

ONLINE, ON THE PHONE, ANYTIME
childline.org.uk | 0800 1111

Telephone: 08001111

Online Chat: Available on their website

Winston's Wish

Information, advice and guidance on supporting bereaved children and young people during the coronavirus (COVID-19) outbreak and our updated services and opening times. Supporting grieving children and parents.



[Winston's Wish - giving hope to grieving children](#)

Foodbanks

Money, Finance and Welfare Benefits

Housing

Mental Health, Emotional wellbeing, Staying active

Domestic Abuse

Sexual Abuse

Safeguarding

Parental Support

Education

Employment/ Training

Community Support

Addiction Support

Support for Children and Young People.

Volunteering

Any other Information

Online Directories

The Mix

Essential support for under 25's, including mental health, housing and relationships

[The Mix - Essential support for under 25s](#)



[new-a-guide-to-staying-at-home-during-the-coronavirus-outbreak.pdf \(activenotts.org.uk\)](#)



Active Derbyshire/Notts Guide to Staying at Home

Our staying active at home page includes this guide showing physical activity you can do at home, if you're shielding or can't get out, there's some illustrated activities to help you stay active

As part of the Improving Access to Psychological Therapies (IAPT), we provide therapy in Derbyshire and Nottinghamshire. You can access the service if you are registered with a GP in one of these areas.

[Self Referral | Trent PTS](#)



Telephone: 01332 265659 Derbyshire

0115 896 3160 Nottingham

To discuss integrated referral routes

jhopkins@trentpts.co.uk

Dr Radha's five mental health tips for lockdown

Dr Radha Modgil from BBC Radio 1's Life Hacks shares her top five tips on how to stay mentally and emotionally well during the coronavirus lockdown

[Coronavirus: Dr Radha's five mental health tips for lockdown - BBC News](#)



Chat Health

If you are a parent or carer for a child aged between 0-19 and want advice or have any concerns you can text 07507327754

If you are aged 11-19 and want advice or have any worries text the young peoples service 07507327104



[Home Page - ChatHealth](#)

Vita Minds

For referrals

Call 0333 0153 496 or by visiting the website and using the self-referral form

The service is now live and offers a range of talking therapies for depression, generalised anxiety disorder, mixed depression and anxiety and a range of other conditions - the full list is on their general information leaflet



Foodbanks

Money, Finance and Welfare Benefits

Housing

Mental Health, Emotional wellbeing, Staying active

Domestic Abuse

Sexual Abuse

Safeguarding

Parental Support

Education

Employment/ Training

Community Support

Addiction Support

Support for Children and Young People.

Volunteering

Any other Information

Online Directories

Derbyshire Dementia Support Service

To view information please click link below

Flyer

yes to a healthier you

Visit: lifelifebetterderbyshire.org.uk

Live Life
BETTER
DERBYSHIRE

Relate Derbyshire offers a range of relationship services that will be delivered by specially trained counsellors.

relate
the relationship people

[Relate Derby and Southern Derbyshire - Relationship Counselling - Derby, Southern Derbyshire & Burton](#)

Please contact us on info@relatederby.org.uk.

01332 349177 or

07741193484

Derbyshire Mental Health Support

If you want to talk to someone about your emotional wellbeing the Derbyshire Mental Health support line is on 0800 028 0077 (24 hours a day, 7 days a week). It's staffed by mental health professionals and is for all ages.

Samaritans

SAMARITANS

If you are having thoughts of self-harm or suicide The Samaritans can be contacted 24 hours a day, 7 days a week on telephone 116 123 or contact Samaritans online <https://www.samaritans.org/>

<https://www.headspace.com/covid-19>

 **headspace**

we're offering some meditations you can listen to anytime.

These are part of a larger collection in the Headspace app — free for every-

Derbyshire LGBT+

Specialist LGBT+ support for young people and their families across Derbyshire. Currently offering online support via youth groups, one

Telephone: 01332 207704

Email:

INFO@DERBYSHIRELGBT.ORG.UK

Online chat: Available on Facebook www.facebook.com/derbyshirelgbt/

 **Derbyshire LGBT+**
Lesbian, Gay, Bisexual, Trans*

[Derbyshire LGBT+ – Lesbian, Gay, Bisexual & Trans* Specialist Support and Advocacy Service](#)

Foodbanks

Money, Finance and Welfare Benefits

Housing

Mental Health, Emotional wellbeing, Staying active

Domestic Abuse

Sexual Abuse

Safeguarding

Parental Support

Education

Employment/ Training

Community Support

Addiction Support

Support for Children and Young People.

Volunteering

Any other Information

Online Directories

Access to Work Mental Health Support Service

This confidential service delivered by Remploy is funded by the Department for Work and Pensions and is available at no charge to any employees with depression, anxiety, stress or other mental health issues affecting their work.

Remploy

Putting ability first

Call—0300 456 8114

a2wmhss@remploy.co.k

www.remplo.co.uk/mentalhealth



DRCS | Your Counselling Service
Operating throughout Derbyshire

Time to talk?

We're here to listen

Telephone

Treatments



SELF REFER: 0800 047 6861 or www.dracs.org.uk

Offer support on:

- what you can do to help a child or young person who is grieving
- how to understand the concept of loss in children and young people of different ages
- how to recognize potential complicated grief.



<https://www.cruse.org.uk/get-help/for-parents>

Derby: 01332 332098

Derby@cruse.org.uk

Suicide Bereavement UK specialise in the following:

Suicide bereavement research;

Providing consultancy on postvention (care of those bereaved by suicide); and

Developing and delivering evidence-based sui-

sharon.mcdonnell@suicidebereavementuk.com



suicidebereavement*

Tel: [01706 827 359](tel:01706827359)

Website: <https://suicidebereavementuk.com>

If you are male, aged 18 or over and need a safe and confidential space to talk, free from advice and judgement,



Please remember that if you're worried about your mental health, you should make an appointment to see a doctor or call the free [Derbyshire Mental Health Support Line](tel:08000280077) on 0800 028 0077. The support line is open 24 hours a day, 7 days a week.

<https://www.mentell.org.uk/learn/online-circles#Continue-Anchor>

[Foodbanks](#)

[Money, Finance and Welfare Benefits](#)

[Housing](#)

[Mental Health, Emotional wellbeing, Staying active](#)

[Domestic Abuse](#)

[Sexual Abuse](#)

[Safeguarding](#)

[Parental Support](#)

[Education](#)

[Employment/ Training](#)

[Community Support](#)

[Addiction Support](#)

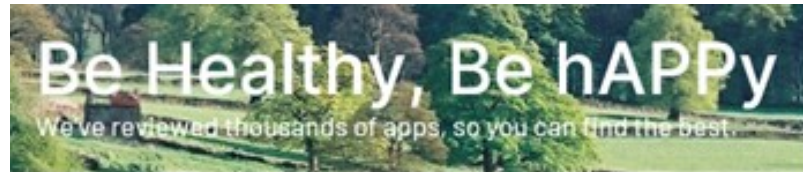
[Support for Children and Young People.](#)

[Volunteering](#)

[Any other Information](#)

[Online Directories](#)

Online and digital health and wellbeing services



Apps include help with mental wellbeing, healthy lifestyles and even long-term condition management.

Visit the new website [ORCHA](#) and search for apps for FREE.

The Derbyshire Mental Health Helpline and Support Service

Struggling to cope?

Talk to us – anytime.



The Derbyshire Mental Health Helpline and Support Service is here for you, 24 hours a day. Call us free on...

0800 028 0077

You can also call 111 and ask for the helpline. The helpline is for both adults and young people

Learn more at www.derbyshirehelpline.com and for other sources of support search 'Derbyshire emotional health and wellbeing'



The Derbyshire Mental Health Helpline and Support Service is here for you, 24 hours a day. Call us free on 0800 028 0077 or call 111 and ask for the helpline.

www.derbyshirehelpline.com

Live Life Better Derbyshire

If you would like to find out more about the healthy lifestyle services that we offer then please get in touch. You can call, email or fill in the quick contact form on our website. Whether you want to feel fitter, lose weight or quit smoking we're here to help the people of Derbyshire to Live Life Better. A member of our team will be happy to help.

Tel: 0800 085 2299 / 01629 538 200

Web: <https://www.livelifebetterderbyshire.org.uk>

Email: lldb.info@derbyshire.gov.uk

Twitter: @DCCPublicHealth

Facebook: Live Life Better Derbyshire

Domestic Abuse: *Bolsover & NED*

Foodbanks

Money, Finance and Welfare Benefits

Housing

Mental Health, Emotional wellbeing, Staying active

Domestic Abuse

Sexual Abuse

Safeguarding

Parental Support

Education

Employment/ Training

Community Support

Addiction Support

Support for Children and Young People.

Volunteering

Any other Information

Online Directories

The Freedom Project—Support for women.

jacuinewhopecommunity@outlook.com

07309 858 955

Horse Spirit Project CIC

Equine Facilitated Psychotherapy for wmen

Location—Near Gloves Lane, Alfreton, DE55 5AB

Pick up can be arranged from Alfreton or nearby areas.

07309 858 955

To refer a client or for more information

[Www.horsespiritproject.co.uk](http://www.horsespiritproject.co.uk)

admin@horsespiritproject.co.uk

Call Maya Gagni 07903 598 324

[Foodbanks](#)

[Money, Finance and Welfare Benefits](#)

[Housing](#)

[Mental Health, Emotional wellbeing, Staying active](#)

[Domestic Abuse](#)

[Sexual Abuse](#)

[Safeguarding](#)

[Parental Support](#)

[Education](#)

[Employment/ Training](#)

[Community Support](#)

[Addiction Support](#)

[Support for Children and Young People.](#)

[Volunteering](#)

[Any other Information](#)

[Online Directories](#)

Domestic Abuse:

If you are in immediate danger call the police 999

Silent Calls to the police

(if you can't speak) – 999 55

For more advice and guidance on domestic abuse, please see <https://www.gov.uk/guidance/domestic-abuse-how-to-get-help>

Derbyshire Domestic Abuse Support Line

Children, young people and families who are affected by domestic abuse or violence can get support, including refuge accommodation.

Mon – Fri 8.00am – 7.00pm

Overnight, weekends and bank holidays contact the helpline and the call will be taken by Call Derbyshire, who will re-

[Haven | Derbyshire Domestic Abuse Helpline](#)



Call 08000 198 668

Text 07534 617252

derbyshiredahelp-
line@theelmfoundation.org.
uk

The National Domestic Abuse Helpline

Provide guidance and support for potential victims, as well as those who are worried about friends and loved ones.

[Home \(nationaldahelpline.org.uk\)](http://Home (nationaldahelpline.org.uk))

0808 2000 247

24 hours a day

Free Calls

Derbyshire County Council

If you are concerned that a child is suffering or is at risk of significant harm please contact Call Derbyshire/Starting Point.

STARTING POINT
A new way of working in Derbyshire.

[website](#)

The Hideout

Women's Aid have created this space to help children and young people to understand domestic abuse, and how to take positive action if it's happening to you.



[Website](#)

Cease

Course to give information to on indications of an abusive relationship, have an understanding of options available. www.remediuk.org



Foodbanks

Money, Finance and Welfare Benefits

Housing

Mental Health, Emotional wellbeing, Staying active

Domestic Abuse

Sexual Abuse

Safeguarding

Parental Support

Education

Employment/ Training

Community Support

Addiction Support

Support for Children and Young People.

Volunteering

Any other Information

Online Directories

Salcare

Domestic abuse support for all genders from all communities

We are continuing provide our services and will be supporting by telephone, text and e mail during our normal working times of 9.30 – 5pm Monday to Friday



website

enquiries@salcare.org.uk

01773 765899

Salcare— Escape Domestic Abuse Service

Contact to find out more, Mckenzie Friend offers support, guidance and help with documents and provide moral support.

Phone—01773 765899

mckenziefriend@salcare.org.uk

www.salcare.org.uk

The Men's Advice Line

A confidential helpline for male victims of domestic abuse and those supporting them.

website

0808 801 0327



Women's Aid

Provides additional advice, extra support is available designed for the current coronavirus outbreak, including a live chat service.

website



Galop

Domestic Violence support for members of the LGBT+ community



Respect

Support if you are worried about hurting someone

If you are worried about hurting the ones you love while staying at home.

website

0808 8024040



Safer Derbyshire

Derbyshire 24/7 helpline

website

08000 198 668

Sexual Abuse:

[**Foodbanks**](#)

[**Money, Finance and Welfare Benefits**](#)

[**Housing**](#)

[**Mental Health, Emotional wellbeing, Staying active**](#)

[**Domestic Abuse**](#)

[**Sexual Abuse**](#)

[**Safeguarding**](#)

[**Parental Support**](#)

[**Education**](#)

[**Employment/ Training**](#)

[**Community Support**](#)

[**Addiction Support**](#)

[**Support for Children and Young People.**](#)

[**Volunteering**](#)

[**Any other Information**](#)

[**Online Directories**](#)

Support for victims and survivors 18+ who have or have had experiences of sexual abuse and violence, including childhood sexual abuse. Sail supports all genders from all communities. Referrals can be made from other agencies and self referral.



[**Website**](#)

Helpline 0800 028 2678

Advice Line

The Advice Line is available between 8am and 5pm every day of the week to provide you with accurate information and relevant advice for your personal situation - 01773 746115



Safeguarding:

[Foodbanks](#)

[Money, Finance and Welfare Benefits](#)

[Housing](#)

[Mental Health, Emotional wellbeing, Staying active](#)

[Domestic Abuse](#)

[Sexual Abuse](#)

[Safeguarding](#)

[Parental Support](#)

[Education](#)

[Employment/ Training](#)

[Community Support](#)

[Addiction Support](#)

[Support for Children and Young People.](#)

[Volunteering](#)

[Any other Information](#)

[Online Directories](#)

Make Yourself Heard

In danger, need the police, but can't speak?

- 1 Dial 999
- 2 Listen to the questions from the 999 operator
- 3 Respond by coughing or tapping the handset if you can
- 4 If prompted, press **55**
This lets the 999 call operator know it's a genuine emergency and you'll be put through to the police.

Led by **IOPC** Supported by **women's aid** **NPCC**



For concerns that are not immediate you can contact Derbyshire police using any of the below methods:



DERBYSHIRE
Constabulary

Phone – call them on 101.

www.derbyshire.police.uk/Contact-Us.

Twitter – direct message their contact centre on @DerPolContact

Facebook – send them a private message to /Derbyshire Constabulary

Hollie Guard - Personal Safety

free to download on any **Android** phone or **iPhone**

In danger? With a simple shake or tap it activates Hollie Guard, immediately notifying your chosen contacts, pinpointing your location and sending audio and video evidence directly to their mobile phones.



We would encourage all hate incidents to be reported to the police. Derbyshire County Council jointly funds [StopHateUK](#) to provide support, advice and alternative reporting to anyone affected by hate crime

STOP HATE CRIME
0800 138 1625
24 HOUR HELP LINE

If you're worried about anti-social behaviour find more information or find out how to report different types of anti-social behaviour.

[Anti-social behaviour \(saferderbyshire.gov.uk\)](http://saferderbyshire.gov.uk)



SafeToNet

To view information please click link below

[Online](#)



Foodbanks

Money, Finance and Welfare Benefits

Housing

Mental Health, Emotional wellbeing, Staying active

Domestic Abuse

Sexual Abuse

Safeguarding

Parental Support

Education

Employment/ Training

Community Support

Addiction Support

Support for Children and Young People.

Volunteering

Any other Information

Online Directories

If you are concerned about a child and think it's an emergency, dial 999 or 101 if it's not an emergency.

On a train text British Transport Police on 61016.

Otherwise contact Crimestoppers on 0800 555 111.

Don't wait. Report it.



Modern slavery

Modern slavery is where a person is brought to, or moved around the country by others who threaten, frighten or hurt them, and force them into work or other things they don't want to do.

For advice - Modern Slavery Human Trafficking Unit on 0300 122 8057 or email MSHTU@derbyshire.pnn.police.uk

Police on 999, if the person is at immediate risk or 101, if a non-emergency - quote Modern Slavery Human Trafficking Unit



Safe and Sound support vulnerable young people at risk of exploitation across Derby and Derbyshire. Don't forget we're running live chat sessions on Facebook EVERY WEEKDAY between 10-11am and 3-4pm.

If you want to chat, have any questions or need some support just drop us a message. These are open to parents and professionals as well as young people.

<https://www.facebook.com/safesoundgroup/>



Child Line

If you're worried about a child, even if you're unsure, contact our professional counsellors for help, advice and support.

childline

ONLINE, ON THE PHONE, ANYTIME
childline.org.uk | 0800 1111

[website](#)

NSPCC

Support for Children and parents in regard to mental health, safety, bullying etc.



[website](#)

Foodbanks**Money, Finance and Welfare Benefits****Housing****Mental Health, Emotional wellbeing, Staying active****Domestic Abuse****Sexual Abuse****Safeguarding****Parental Support****Education****Employment/ Training****Community Support****Addiction Support****Support for Children and Young People.****Volunteering****Any other Information****Online Directories**

The CORE website has been created to support victims of crime, giving people access to the different types of help they may need from just one place. The aim is to ensure that every victim of crime or anti-social behaviour has access to the best possible support service.



On these pages you will find useful information and contact details which have been brought together with help from victim services, the police, local authorities, the fire and rescue services, health services, voluntary organisations and specialist support groups.

For detail of victim services in Derbyshire visit the Core website www.core-derbyshire.com

<https://www.childnet.com/parents-and-carers>

Keeping under 5's safe online....

<https://www.childnet.com/parents-and-carers/hot-topics/keeping-young-children-safe-online>

<https://www.childnet.com/parents-and-carers/hot-topics>

Disney+ parents' guide: what is it and is it safe for kids?

<https://parentzone.org.uk/article/disney-parents%E2%80%99-guide-what-it-and-it-safe-kids>



Parental Support: *Bolsover & NED*

Foodbanks

Money, Finance and Welfare Benefits

Housing

Mental Health, Emotional wellbeing, Staying active

Domestic Abuse

Sexual Abuse

Safeguarding

Parental Support

Education

Employment/ Training

Community Support

Addiction Support

Support for Children and Young People.

Volunteering

Any other Information

Online Directories

Bolsover & North East Derbyshire Children's Centres

<https://www.derbyshire.gov.uk/education/early-years-childcare/childrens-centres/childrens-centres.aspx>



Alice's View Children's Centre 01629 533266

Bolsover Children's Centre 01629 533851

Creswell Children's Centre 01629 537396

Eckington Children's Centre 01629 537169

Shirebrook Children's Centre 01629 537398

Children's Centre Co-ordinator: Julie Stanley

Junction Arts

<https://junctionarts.org/community-projects/voyage-of-discovery/>



Web site :

<https://www.parentingadditionalneeds.org.uk>

Email : parentingadditionalneeds@yahoo.co.uk

Facebook : www.facebook.com/parentingadditionalneeds



Parental Support:

[Foodbanks](#)

[Money, Finance and Welfare Benefits](#)

[Housing](#)

[Mental Health, Emotional wellbeing, Staying active](#)

[Domestic Abuse](#)

[Sexual Abuse](#)

[Safeguarding](#)

[Parental Support](#)

[Education](#)

[Employment/ Training](#)

[Community Support](#)

[Addiction Support](#)

[Support for Children and Young People.](#)

[Volunteering](#)

[Any other Information](#)

[Online Directories](#)

We offer information and support in understanding the digital world, to help raise resilient children. Our services include Parent Info, and the Parent Lounge, which gives access to our Parenting in the Digital Age training course



[Website](#)

Please find below a link to the Increasing Data Allowance information on the DirectGov website.

<https://get-help-with-tech.education.gov.uk/about-increasing-mobile-data>



Tik Tok: a guide for parents



A new Parent Info article explores [how Tik Tok works](#), the parental controls available, and how they can help their child to stay safer on the platform.

Free Childcare for 2 year old's.



To find out about free childcare and apply for 2 year old funding

[Www.derbyshire.gov.uk/fcc](http://www.derbyshire.gov.uk/fcc)

Text 'Child' to 86555

Email freshchildcare@derbyshire.gov.uk

Call 01629 539116 or 01629 539793

Cry-sis Helpline

CRY-SIS HELPLINE 08451 228 669

Lines open 7 days a week 9am-10pm

2p per minute plus the standard network charge

Getting help with a crying baby

You can talk to a friend, your health visitor or GP, or contact the Cry-sis helpline on 08451 228 669, open 9am to 10pm, 7 days a week. You'll be charged for your call.

Cry-sis can put you in touch with other parents who have been in the same situation.

You can also visit the Cry-sis website for [information on coping with crying babies](#).

Calls cost no more than a maximum of 2p per minute.

Foodbanks

Money, Finance and Welfare Benefits

Housing

Mental Health, Emotional wellbeing, Staying active

Domestic Abuse

Sexual Abuse

Safeguarding

Parental Support

Education

Employment/ Training

Community Support

Addiction Support

Support for Children and Young People.

Volunteering

Any other Information

Online Directories

We are now delivering HENRY Healthy Families Right From The Start courses virtually over 8 weeks.

You can also register your interest in future courses once we are delivering face to face: HENRY starting solids, Healthy eating and active workshop and HENRY a healthy start in childcare. All details can be found on the website.



[Website](#)

Healthy eating and lifestyles for families

This interactive e-learning course is designed for anyone interested in improving their eating habits and lifestyle. It also supports people to think about the importance of being active with hints and tips to do so. We hope you enjoy the experience and its first step to making positive changes. The e-learning takes around 45 minutes to complete.

<https://www.derbyshire.gov.uk/social-health/health-and-wellbeing/your-health/children-and-young-peoples-health/henry/health-exercise-and-nutrition-for-the-really-young-henry.aspx>

<https://www.pacey.org.uk/parents/>



<https://letsgowiththechildren.co.uk/kids-creative-activities/>



Website

The Breastfeeding Network

We've had to make some changes to our service to fit with venue closures, infection control measures and sensible distancing precautions, but there's still lots of support we can offer you.

We will update this document as things develop but here's what you can expect from us over the coming weeks



Breastfeeding Support 2021

Monday
10am Long Eaton Breastfeeding Support
1pm Breastmates High Peak and Dale

Tuesday
11am BEARS Amber Valley

Thursday
10am Cradles Ilkeston
8pm Breastmates (alternate weeks)

Friday
10am Ashbourne Mum 2 Mum (alternate weeks)
1.30pm Feeding Together Bolsover and Chesterfield

Saturday
10am Feeding Together: South Derbyshire (Launching 10th April)

Sunday
Last Sunday of the month Breastmates Breastfeeding Brunch

visit www.breastfeedingnetwork.org.uk/derbyshire/ or the individual group's facebook page for details



Mother Hub

[Website](#)

Our aim is to show Derbyshire women the choices they have in their maternity care and provide reliable information for pregnancy, birth and the early days with baby.



Foodbanks

Cooking on a budget

website

Jack Monroe's recipes provide families who are struggling on a tight budget might benefit from having some very inexpensive and easy

Money, Finance and Welfare Benefits

Parental Support online magazine

[Website](#)



Housing

Our Early Years in Mind team have put together these resources to help early years workers to start planning now for how they may be able to help oil the wheels of this important transition, and make it as stress free for young children as possible.



Anna Freud
National Centre for
Children and Families

Mental Health, Emotional wellbeing, Staying active

<https://www.annafreud.org/coronavirus-support/support-for-early-years/>

Domestic Abuse

School and colleges are having to work in new ways and develop new relationships in the lockdown. We have published a series of resources to help support staff and to provide them with information about how to work with children and young people, include those with SEN, and materials

<https://www.annafreud.org/coronavirus-support/support-for-schools-and-colleges/>

Sexual Abuse

Safeguarding

Parental Support

Education



The national OCD charity, run by and for people with lived experience of OCD

offering parent training and webinar for parents across the midlands/nationally

www.ocduk.org

Employment/ Training

Community Support



<https://www.barnardos.org.uk/see-hear-respond>

Or call us on our freephone number:

0800 157 7015

Addiction Support

Support for Children and Young People.

The See, Hear, Respond Partnership will quickly identify and support children, young people and families who are struggling to cope with the impacts of coronavirus.

To join a virtual group please visit the groups individual Facebook pages

Volunteering

Any other Information

Derbyshire DadPad app, which aims to help dads to be prepare for parenthood .



Supporting patients and families – 1-1 support for families patients and carers and look at their needs .

To find out more and to download the app, visit:
www.thedadpad.co.uk/app

Parental Safety

<https://www.saferinternet.org.uk/advice-centre/parents-and-carers>

<https://www.thinkuknow.co.uk/parents/>

Online Directories

Foodbanks

Money, Finance and Welfare Benefits

Housing

Mental Health, Emotional wellbeing, Staying active

Domestic Abuse

Sexual Abuse

Safeguarding

Parental Support

Education

Employment/ Training

Community Support

Addiction Support

Support for Children and Young People.

Volunteering

Any other Information

Online Directories

Ante natal and Post-natal apps

Parents can use these to find out local information of what's available to support them in pregnancy and post birth

Healthzone App

Each hospital uploads their own information,. See link to the app below:

https://play.google.com/store/apps/details?id=uk.co.piota.healthcentral&hl=en_GB

There is a useful overview of the Healthzone app from Maternity Voices on their Facebook page:

<https://ne-np.facebook.com/DerbyshireMaternityVoices/videos/healthzone-uk/250344186094056/>
<https://motherhubderbyshire.co.uk/local-services>

[Website](#)



British Society of
Paediatric Dentistry

BSPD has lined up a great team to help make toothbrushing fun for families. Meet Dr Ranj, Hey Duggee, CBeebies and Brush DJ. Choose a video and be inspired to look after your teeth!

Tiny Happy People is here to help you develop your child's communication skills. Explore our simple activities and play ideas and find out about their amazing early development.

TINY Happy PEOPLE
Your words build their world

[Website](#)

Derbyshire Libraries—Online events

Visit the Facebook site for online events and online child activities.

www.facebook.com/derbyshireLibraries

Derbyshire Healthy Family Service

<https://www.derbyshirehealthyfamily.org.uk/>



Derbyshire
Healthy Family
Service
for 0-3 years

Wheels to Work

Support with any transport obstacles for work education etc

[Home \(wheelstowork.org\)](http://wheelstowork.org)

Anyone 16 +



Derby | Notts
Wheels to Work
& Wellbeing

Derbyshire Community Health Services NHS Foundation Trust

Care Coordinators in Chesterfield— GP Practices

We are here to help you stay safe and well in your home by offering support, advice and information on services available in the community.

Care Coordinators:

Are part of the Community Support Team employed by Derbyshire Community Health Services. We are based at your local GP Practice.

We can link between all the different services and organisations in the community.

We can help you to get the support you need to remain independent in your own home for as long as possible.

If you are a family member or carer of someone and you also feel you need some extra help, support or information we can help you too.

How we can help:

We can help in a variety of ways, for example:

- Have you got poor mobility?
- Do you struggle with personal care, bathing etc?
- Would you benefit from equipment such as grab rails, raised toilet seat?
- Are you struggling with shopping or cooking?
- Would you like to get out more, are you lonely?
- Have you fallen recently?
- Are you are a carer and struggling?
- Are you worried about your memory?
- Do you worry about your energy?
- Have you had a full benefit / income check?
- Would you like support from bereavement groups or services?
- Would you benefit from the Handyperson DIY scheme?
- Have you had a home safety check i.e. fire alarm, door locks etc.
- Do you struggle to manage your long term health conditions?
- Do you understand your medications?
- Would you like advice on living well?

If in doubt, contact your Care Coordinator for advice and support.

Continued on next page.....

Foodbanks

Money, Finance and Welfare Benefits

Housing

Mental Health, Emotional wellbeing, Staying active

Domestic Abuse

Sexual Abuse

Safeguarding

Parental Support

Education

Employment/ Training

Community Support

Addiction Support

Support for Children and Young People.

Volunteering

Any other Information

Online Directories

Foodbanks

Money, Finance and Welfare Benefits

Housing

Mental Health, Emotional wellbeing, Staying active

Domestic Abuse

Sexual Abuse

Safeguarding

Parental Support

Education

Employment/ Training

Community Support

Addiction Support

Support for Children and Young People.

Volunteering

Any other Information

Online Directories

Referral to the Care Coordinator:

Either ask your GP (or any other health professional) for a referral or alternatively you can self refer by contacting :

Helena Muxlow - Care Coordinator

Tel: 01246 244048

Inspire Health: Saltergate

Hasland Partnership, St Philips Drive,

Hasland Medical Centre, Jepson Rd,

Ros Hague - Care Coordinator

Tel: 01246 273224

Brimington Surgery

Royal Primary Care: The Grange

James Swift - Care Coordinator

Whittington Moor Surgery

Newbold Surgery

Leian Rogers - Care Coordinator

Office tel number for all sites;

01246 748143

(Rectory Rd & Inkersall)

Royal Primary Care:

Inkersall Family Health Centre

Also Staveley Centre Discharge Coordinator

Marie Flint - Care Coordinator

(Ashgate, Whittington, Holme Hall)

Chatsworth Road Medical Centre

Royal Primary Care West

Whittington Medical Centre,

Wheatbridge Surgery –

Care Co-ordinator 01246277287

Here are just some of the teams we work with on your behalf:

Adult Social Services

Advocacy Services

Befriending Services / Community Support

Groups / Luncheon Clubs

Care Link/ Care Home Link

Community Matrons

Community Mental Health Team Community Safety / Fire Service / Police

Community Therapy Teams / falls services Continence Services

Counselling / Bereavement Support Groups Dementia/Making Space/

Alzheimer's Society Advice/Welfare Rights/DWP Derbyshire Carers / Carers

Support Groups

District Nurses

Frailty Support

GP's / Practice Nurse / Practice Staff Handy Person DIY Service / Trusty

Trader Hearing and Sight Support Services

Hospital Discharge Teams/Help for Harry/Home from Hospital

Hospital Admission & Discharge Teams

Housing Associations

Live Well

Local Area Coordinators

Long Term Condition support services such as

Palliative Care Team /

Patient Transport Services

Podiatry Services

Royal British Legion / ex forces support

Respite Care / Day Centres Wheelchair Services

[Foodbanks](#)

[Money, Finance and Welfare Benefits](#)

[Housing](#)

[Mental Health, Emotional wellbeing, Staying active](#)

[Domestic Abuse](#)

[Sexual Abuse](#)

[Safeguarding](#)

[Parental Support](#)

[Education](#)

[Employment/ Training](#)

[Community Support](#)

[Addiction Support](#)

[Support for Children and Young People.](#)

[Volunteering](#)

[Any other Information](#)

[Online Directories](#)

Education:

National Careers

National Careers service give free and impartial information, advice and guidance about career opportunities, learning and employment to any Derbyshire residents aged 19 years and over and to those aged 18 who are not currently in education, employment or training.



**National
Careers
Service**

Please see the ne National careers video below showing what services Nation Careers caches are offering.

[You tube link](#)

Spring Term 2021 **Learning for Leisure**

Online brochure to access details go to :

www.derbyshire.gov.uk/coursesearch



DERBYSHIRE
County Council
Improving life for local people

NLT Step into Employment

FREE 6 week employability programme for people in Derbyshire who are not in employment, education or training.

Call—07947 550571

Janice.parker@nlt-training.co.uk

Www,nlt-training.co.uk

Want to improve your digital know-how for work, career or business?



make it click

The **Make it Click** project, from the Good Things Foundation, can help you grow your digital skills and confidence.

To find out more about this opportunity, or book a support slot, contact us via the Derbyshire Library Information Service on **01629 533444** or ask.library@derbyshire.gov.uk

You can also book a slot online via Eventbrite at: <https://www.eventbrite.co.uk/e/make-it-click-one-to-one-digital-skills-support-sessions-via-phone-tickets-146735536941>

aimed at limited users of the internet (aged over 18) who are looking for work, a new career or starting their own business, with a range of resources which include the subject areas,

Employment/ Training: *Bolsover &*

Foodbanks

Money, Finance and Welfare Benefits

Housing

Mental Health, Emotional wellbeing, Staying active

Domestic Abuse

Sexual Abuse

Safeguarding

Parental Support

Education

Employment/ Training

Community Support

Addiction Support

Support for Children and Young People.

Volunteering

Any other Information

Online Directories

Acorn Training Ltd

www.acorntraining.co.uk

Suite 1A, Stephenson Chambers, 6-8 Corporation Street, Chesterfield, S41 7TP
Telephone: 01246 520530

Email: info@acorntraining.co.uk



Clowne Enterprise provides flexible, one-to-one support for anyone in North Derbyshire looking to enter self-employment or otherwise set up their own business.



paul@clowne-enterprise.org.uk

nigel@clowne-enterprise.org.uk

Tel. 07973 522772

Tel. 07989 251 333

Or visit our website at <https://clowne-enterprise.org.uk/>

Employment/ Training:

[Foodbanks](#)

[Money, Finance and Welfare Benefits](#)

[Housing](#)

[Mental Health, Emotional wellbeing, Staying active](#)

[Domestic Abuse](#)

[Sexual Abuse](#)

[Safeguarding](#)

[Parental Support](#)

[Education](#)

[Employment/ Training](#)

[Community Support](#)

[Addiction Support](#)

[Support for Children and Young People.](#)

[Volunteering](#)

[Any other Information](#)

[Online Directories](#)

TED Ed

TED Ed is a related site, which offers free short learning sessions. Take a few minutes out of your day to explore a topic of interest to you.



[Lessons Worth Sharing | TED-Ed](#)

MOOC! There are loads of free on line learning courses available.

'Massive Open Online Course'

This link takes you to the Open Universities wide selection of on line courses that are free to access

[The Open University Free Online Courses and MOOCs | MOOC List \(mooc-list.com\)](#)

This government website offers training courses at 'beginner', 'intermediate; and 'advanced' levels and takes the learner to the relevant training provider offering courses.

All training courses are FREE.

[New free online learning platform to boost workplace skills - GOV.UK \(www.gov.uk\)](#)



GOV.UK

Anyone with an enquiry can contact our **Derbyshire Library Information Service.**

As well as providing details about our library services, this is a general information service and we can also arrange to deliver digital skills support over the phone:

Tel: 01629 533444

Email: ask.library@derbyshire.gov.uk

These course are all FREE to health, social and community staff and volunteers working with adults in Derbyshire and can be booked at

**Derbyshire
Recovery
Partnership**



Working Ways

Working Ways 
Intensive Personalised Employment Support

Effective employment support for people with a disability.

For full details visit the website below or call on 08000155332

[Website](#)

NCS this summer will be a FREE 2 week programme delivered across August in your community, where 15-17 year olds will work in teams guided by NCS staff to Keep Doing Good.



[Website](#)

Foodbanks

Money, Finance and Welfare Benefits

Housing

Mental Health, Emotional wellbeing, Staying active

Domestic Abuse

Sexual Abuse

Safeguarding

Parental Support

Education

Employment/ Training

Community Support

Addiction Support

Support for Children and Young People.

Volunteering

Any other Information

Online Directories

Towards Work

Work coaches, personal budget , job brokers etc

[Www.towardswork.org.uk](http://www.towardswork.org.uk)

**Rural Action Derbyshire
Cyber Buddies**

Helping to connect people through digital channels

There are 'trained' cyber buddies across Derbyshire to help with 1 to 1 digital support

01629 592970 leave message

j.dugdale@ruralactionderbyshire.org.uk

Community Support: *Bolsover & NED*

[Foodbanks](#)

[Money, Finance and Welfare Benefits](#)

[Housing](#)

[Mental Health, Emotional wellbeing, Staying active](#)

[Domestic Abuse](#)

[Sexual Abuse](#)

[Safeguarding](#)

[Parental Support](#)

[Education](#)

[Employment/ Training](#)

[Community Support](#)

[Addiction Support](#)

[Support for Children and Young People.](#)

[Volunteering](#)

[Any other Information](#)

[Online Directories](#)

Age Concern

Jo Sinclair email: tbs@ageconcernchesterfield.co.uk
or

Telephone 07434 615672



Bolsover District Council – Community Support Team

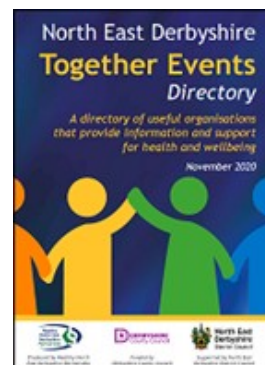
www.bolosver.gov.uk

Online form to register if you are self-isolating



NED Together Events Directory of Services

[NED Together Events Directory of Services](#)



North East Derbyshire District Council – Community Support Team

www.ne-derbyshire.gov.uk

Online form to register if you are self-isolating



North East Derbyshire District Council

Kindness works <https://m.facebook.com/groups/2361989460758159/>

[no-](#)

[tif t=groups_member_joined¬if_id=1584225147539987&ref=m_notif](#)

Community Support:

[Foodbanks](#)

[Money, Finance and Welfare Benefits](#)

[Housing](#)

[Mental Health, Emotional wellbeing, Staying active](#)

[Domestic Abuse](#)

[Sexual Abuse](#)

[Safeguarding](#)

[Parental Support](#)

[Education](#)

[Employment/ Training](#)

[Community Support](#)

[Addiction Support](#)

[Support for Children and Young People.](#)

[Volunteering](#)

[Any other Information](#)

[Online Directories](#)

Living Well with Dementia Online Programme



Here is a link to an online version of the Living Well with Dementia Programme: <https://surveys.derbyshcft.nhs.uk/s/LivingWellWithDementia/>

Neighbourhood Watch Network

The Neighbourhood Watch Network supports individuals and groups to create safer, stronger and active communities. To find your local neighbourhood watch please go the OurWatch website on the link below and enter your postcode.

Website

Deaf-initely Women Community Support Group

Every Thursday 2-3pm – they will be around on Facebook group but most will be using Zoom – more private and able to see each other with subtitle.



Definitely Women have created a new group for women who are deaf, deafblind, hard of hearing and any hearing loss.

<https://www.deafinitelywomen.org.uk/> to find out more.

Arts Derbyshire - A Necklace of Stars

Following on from the success of the first phase of *A Necklace of Stars*, we are looking for older adults who are housebound (aged 65+) from across Derbyshire to please contact Sally Roberts on 07395 904386 or email sallyartsderbyshire@gmail.com



Derbyshire Autism Alliance

Support for parents/ carers/ friends of someone living with Autism, Virtual Zoom meetings,

For more information or if you are interested in joining

Call 01332 228 790

Or email autismservice@citizenadvicemercia.org.uk



Foodbanks

Money, Finance and Welfare Benefits

Housing

Mental Health, Emotional wellbeing, Staying active

Domestic Abuse

Sexual Abuse

Safeguarding

Parental Support

Education

Employment/ Training

Community Support

Addiction Support

Support for Children and Young People.

Volunteering

Any other Information

Online Directories

DAY	GROUP/EVENT
MONDAY	Men's Group/Women's Group on alternate weeks
TUESDAY	Virtual drop-in
WEDNESDAY	Trans support group/ late night telephone support
THURSDAY	Virtual drop-in
FRIDAY	Early evening telephone support
SATURDAY	Youth group
SUNDAY	Young people's group

For links to join the groups/drop-ins, email [in-fo@derbyshirelgbt.org.uk](mailto:info@derbyshirelgbt.org.uk) or message us on our Facebook page.

For links to join youth groups, email sallyh@derbyshirelgbt.org.uk

Call 01332 207 704 for more information or check out our website: www.derbyshirelgbt.org.uk

**Free PPE For Carers
Derbyshire Carers**

info@derbyshirecarers.co.uk

Unpaid carers who do not live with the people they care for can now get free PPE from DCC

<https://bit.ly/2NT49bQ>

01773 833 833

Or email ppesupplies@derbyshire.gov.uk



Preventing Extremism and Radicalisation

It can be hard to know what to do if you're worried someone close is expressing extreme views or hatred, which could lead to them harming themselves or others. Working with other organisations, the police protect vulnerable people from being exploited by extremists through a Home Office programme called Prevent.

Act early and tell them your concerns in confidence. You won't be wasting their time and you won't ruin lives, but you might save them.

Foodbanks

Money, Finance and Welfare Benefits

Housing

Mental Health, Emotional wellbeing, Staying active

Domestic Abuse

Sexual Abuse

Safeguarding

Parental Support

Education

Employment/ Training

Community Support

Addiction Support

Support for Children and Young People.

Volunteering

Any other Information

Online Directories

Be Cancer Safe

Did you know more people in Derbyshire are diagnosed with cancer than the England average?

Building on the Be Cancer SAFE North Derbyshire campaign, Derbyshire Voluntary Action are working to raise awareness of bowel cancer signs and symptoms and the importance of screening amongst men in areas where uptake is traditionally low. Bowel cancer is the 4th most common cancer in the UK and affects 1 in every 15 men and 1 in 18 women. The disease is treatable and curable, especially if diagnosed early.

The project employs a community approach to improving cancer survival creating a network of cancer champions who help to remove barriers and normalise conversations about cancer. This in turn can lead to more people attending their screening or contacting their GP if there are concerns.

You can find out more and make a pledge to be a cancer champion by visiting www.becancersafe-nd.org and simply start having health conversations wherever and whenever you get the opportunity.

Our message is simple:

- Screening – Participate in screening when invited
- Awareness – Be aware of any changes in your body
- Fast – If you notice changes, act fast. Contact your GP
- Early – Early detection saves lives. Recognise the symptoms and act promptly

To find out more please email: Richard at becancersafe@dva.org.uk

Join us on social media [@BeCancerSafe_ND](https://www.facebook.com/BeCancerSafeND), Facebook Be Cancer Safe North Derbyshire and Instagram BeCancerSafeND



Addiction Support:

[Foodbanks](#)

[Money, Finance and Welfare Benefits](#)

[Housing](#)

[Mental Health, Emotional wellbeing, Staying active](#)

[Domestic Abuse](#)

[Sexual Abuse](#)

[Safeguarding](#)

[Parental Support](#)

[Education](#)

[Employment/ Training](#)

[Community Support](#)

[Addiction Support](#)

[Support for Children and Young People.](#)

[Volunteering](#)

[Any other Information](#)

[Online Directories](#)

Change Grow live

Supporting young people who are using drugs or alcohol, feel they have a problem and want some help. We're not here to judge you or tell you what to do, but we can help you make the changes you want to make.



[website](#)

Supporting children who are seriously affected by someone else's substance misuse.



[Website](#)

Derbyshire Recovery and Peer Support Service

The Derbyshire Recovery and Peer Support Service has set up a helpline.

Monday to Friday - 09.00 - 17.00

(Will be reviewed regularly and times/days could be expanded).

Telephone:

01773 303646

Email: derbyshire@cgl.org.uk.

National Gambling Helpline

24/7 service, ran by Gamcare, core element of the National Gambling Treatment Service

For both harmful gamblers and affected others.

Work through some immediate strategies to try and reduce the gambling in the short-term.

Can also place referral for the person to access specialist partner service in their local area.

0808 8020 133

<https://www.gamblingtherapy.org/en/gambling-therapy-presents-gt-app>

online help for problem gamblers

**gambling
therapy**

Foodbanks

Money, Finance and Welfare Benefits

Housing

Mental Health, Emotional wellbeing, Staying active

Domestic Abuse

Sexual Abuse

Safeguarding

Parental Support

Education

Employment/ Training

Community Support

Addiction Support

Support for Children and Young People.

Volunteering

Any other Information

Online Directories

Providing the tools and information to build digital resilience, educate and safeguard young people against problematic gambling and gaming.



<https://www.ygam.org/>

GamCare Midlands partner Aquarius



gambling@aquarius.org.uk

0300 456 4293

CBT and various psycho-social intervention techniques, group-based gambling recovery courses.

We would refer a severely harmful gambler to Aquarius, our local Gamcare partner service, for specialist support. As many sessions as a client wishes, can be conducted via telephone or in person.



Rehab 4 Addiction is a free addiction helpline run by people who've beaten addiction in their own lives. Rehab 4 Addiction was founded to assist those affected by substance misuse and their loved ones. We offer a range of services and help signpost you to the most effective treatments.

0800 140 4690/ <https://www.rehab4addiction.co.uk/>

Support for Children and Young People: *Bolsover & NED*

[Foodbanks](#)

[Money, Finance and Welfare Benefits](#)

[Housing](#)

[Mental Health, Emotional wellbeing, Staying active](#)

[Domestic Abuse](#)

[Sexual Abuse](#)

[Safeguarding](#)

[Parental Support](#)

[Education](#)

[Employment/ Training](#)

[Community Support](#)

[Addiction Support](#)

[Support for Children and Young People.](#)

[Volunteering](#)

[Any other Information](#)

[Online Directories](#)

The Hub Hangout 11-16 year olds—term time

Every Wednesday 5-7pm.

For more information call 01246 859210

The Hub, Broadleys. Claycross, S45 9JN

Support for Children and Young People:

[Foodbanks](#)

[Money, Finance and Welfare Benefits](#)

[Housing](#)

[Mental Health, Emotional wellbeing, Staying active](#)

[Domestic Abuse](#)

[Sexual Abuse](#)

[Safeguarding](#)

[Parental Support](#)

[Education](#)

[Employment/ Training](#)

[Community Support](#)

[Addiction Support](#)

[Support for Children and Young People.](#)

[Volunteering](#)

[Any other Information](#)

[Online Directories](#)

CAMHS - Supporting bereaved children during the outbreak of Covid-19

Many children and young people will have questions and worries about the virus, but those who have experienced the death of someone important or who have an ill family member might be particularly worried.

This has been created to provide information to help professionals feel more informed about how best to support children, young people and their families with bereavement.

To view full information please click link below

[CAMHS - Supporting bereaved children during the outbreak of Covid-19](#)

Childrens guide to Coronavirus Website

Covid-19 Packs for Children Website

UNICEF for Every Child Website



ONLINE Postal Condoms Website



What support do they offer? Information and advice on managing anxiety, bullying, internet safety, staying safe and a place you can speak to trained councillors.

Telephone: 0800111 1

Online Chat: Available on their website

ChildLine – Website

childline
ONLINE, ON THE PHONE, ANYTIME
childline.org.uk | 0800 1111

Derbyshire Carers Association (DCA) run support services for Young Carers in Derbyshire



Foodbanks

Money, Finance and Welfare Benefits

Housing

Mental Health, Emotional wellbeing, Staying active

Domestic Abuse

Sexual Abuse

Safeguarding

Parental Support

Education

Employment/ Training

Community Support

Addiction Support

Support for Children and Young People.

Volunteering

Any other Information

Online Directories

Action for Children - www.actionforchildren.org.uk

What support do they offer? We protect and support children and young people, provide practical and emotional care and support, ensure their voices are heard, and campaign to bring lasting improvements to their lives. Offering support around fostering, adoption and through resources.

Daily tips and tricks on how to boost your wellbeing/ Feel Good Booklet



Website

[Website](#)



PAPYRUS
PREVENTION OF YOUNG SUICIDE

Papyrus

Papyrus provides confidential support and advice to young people under the age of 35 who are experiencing thoughts of suicide, and anyone worried about a young person at risk of suicide.

ChatHealth

Health and support for 11-19 year olds.
Text for confidential advice
07507 330025



Mermaids

Mermaids has been supporting trans and gender-diverse children, young people, and their families since 1995.

0808 801 0400

Helpline Open Monday to Friday, 9am to 9pm



[Website](#)

New online access for Sexual Health Services

The following new services are FREE,

Condoms by post – this includes C-Card for 13-24 year olds and 24 years+

Oral contraception – virtual assessment and prescriptions posted out

Postal emergency contraception (over 16s only). Under 16s can still contact the service to request emergency contraception via our information and booking line

STI & HIV testing – including treatment for chlamydia by post

Virtual sexual health promotion advice

Photo diagnosis for lumps, bumps and warts (18 years old and over)

website: www.yoursexualhealthmatters.org.uk or Information and Booking line: 0800 328 3383.



DCC Online Library events

Storytime . Rhyme time etc ...

<https://www.facebook.com/DerbyshireLibraries>

Foodbanks

Twitter@DerbyshireLibs

Facebook.com/DerbyshireLibraries

Money, Finance and Welfare Benefits

Housing

Mental Health, Emotional wellbeing, Staying active

Domestic Abuse

Sexual Abuse

Safeguarding

Parental Support

Education

Employment/ Training

Community Support

Addiction Support

Support for Children and Young People.

Volunteering

Any other Information

Online Directories

Compassionate Voice

Emotional wellbeing/wellbeing and empowerment programmes young people.

The survey will be live until May 19th and asks children across England to set out their priorities for improving childhood post-Covid.

The results from this survey will help the Children's Commissioner identify the barriers preventing children from reaching their potential, put forward solutions and set ambitious goals for the country to achieve.

Children and young people can take part in the survey at thebigask.uk

If you are a teacher, or work with children and young people we have lots of resources to support you implementing the survey with them.



Volunteering: *Bolsover & NED*

[Foodbanks](#)

[Money, Finance and Welfare Benefits](#)

[Housing](#)

[Mental Health, Emotional wellbeing, Staying active](#)

[Domestic Abuse](#)

[Sexual Abuse](#)

[Safeguarding](#)

[Parental Support](#)

[Education](#)

[Employment/ Training](#)

[Community Support](#)

[Addiction Support](#)

[Support for Children and Young People.](#)

[Volunteering](#)

[Any other Information](#)

[Online Directories](#)

Bassetlaw CVS
Tel: 01909 476118
Email: admin@bcvs.org.uk



[website](#)

Links CVS
Tel: 01246 272844

[website](#)

Email: [in-fo@linkscvs.org.uk](mailto:info@linkscvs.org.uk)



Volunteer for Derbyshire County Council Children's Services



Bolsover & North East Derbyshire Youth & Community Engagement Worker

Tina Eltringham

Mobile: 07785381128

Email: tina.eltringham@derbyshire.gov.uk

Groundwork Volunteering Opportunity

Do you enjoy being outdoors and with like minded people

Would you like to make a difference to the woodland, wildlife, meadows and footpaths and cycle routes in the area .

Join us by volunteering and carrying out practical conservation tasks around the village of Holmewood. The Holmewood Woodland and five pits trail on Wed and Fridays from April onwards.

Contact Marion Farrell

Groundwork on 07801 122 494

Email ; marion.farrell@groundworknottingham.org.uk

Volunteering:

[Foodbanks](#)

[Money, Finance and Welfare Benefits](#)

[Housing](#)

[Mental Health, Emotional wellbeing, Staying active](#)

[Domestic Abuse](#)

[Sexual Abuse](#)

[Safeguarding](#)

[Parental Support](#)

[Education](#)

[Employment/ Training](#)

[Community Support](#)

[Addiction Support](#)

[Support for Children and Young People.](#)

[Volunteering](#)

[Any other Information](#)

[Online Directories](#)

Derbyshire Carers Telephone Befriending

01773 833833



Telephone Befriending at [Derbyshire Carers Association](#) (DCA) is a regular friendly call from a fully trained volunteer to help alleviate isolation and provide some company and light conversation to adult Carers (over 18) within Derbyshire (not Derby City). DCA phone volunteers give support, reassurance, a listening ear.

British Red Cross online training course for coronavirus volunteers

[Website](#)



Derbyshire Mental Health Community Groups Network

Do you volunteer or work within mental health in Derbyshire or Derby?

If so we would love you to join us for a relaxed networking meeting for community groups.

Next meeting - 1.30pm - 3.00pm Wednesday 5 May 2021

To join:

<https://zoom.us/j/92990606980?pwd=UmFIOEVFL1NwejJuV0RZS1dydXJldz09>

Meeting ID: 929 9060 6980 Passcode: 835864

To confirm attendance please email:
natalie@erewashcvcs.org.uk or bryony@dva.org.uk



Any other local info: *Bolsover & NED*

Foodbanks

Money, Finance and Welfare Benefits

Housing

Mental Health, Emotional wellbeing, Staying active

Domestic Abuse

Sexual Abuse

Safeguarding

Parental Support

Education

Employment/ Training

Community Support

Addiction Support

Support for Children and Young People.

Volunteering

Any other Information

Online Directories

Undefeatable

<https://weareundefeatable.co.uk>

We Are Undefeatable is a campaign supporting those with long term health conditions to be more active.



WE ARE
UNDEFEATABLE

Young Minds

<https://youngminds.org.uk/>

Parents Helpline: 0808 802 5544

Monday – Friday 9:30am – 4:00pm



YOUNGmINDS

Frank

<https://www.talktofrank.com/>

For advice, support and honest information about drugs.

Phone: 0300 123 6600 24 hours 7 days



FRANK

The Derbyshire Scam watch team work throughout Derbyshire, raising awareness of all the latest scams. We also provide support when people have been the targets of scammers.

Our telephone number is 07925 643050.

Email: scamwatch@nedcab.org.uk

Our leaflets can be downloaded via our Website: <http://>

www.derbyshirescamwatch.org.uk/



Any other local info:

Foodbanks

Money, Finance and Welfare Benefits

Housing

Mental Health, Emotional wellbeing, Staying active

Domestic Abuse

Sexual Abuse

Safeguarding

Parental Support

Education

Employment/ Training

Community Support

Addiction Support

Support for Children and Young People.

Volunteering

Any other Information

Online Directories

Derbyshire Carers Association (DCA) run support services for Young Carers in Derbyshire



Young people's experience of loneliness in spring/ summer 2020 lockdown and beyond

<https://www.carersinderbyshire.org.uk/young-carers>

EU Citizens living in the UK

Protect your rights by applying to the EU settlement scheme.

01827 909101

Free magic teaching workshop for children

Duncan William is a professional magician. For the past 2 years he has been performing as a virtual magician. As a result of the pandemic and people struggling to keep their children entertained and focussed, he has made his 30 minute professionally produced magic teaching video free of charge for those people who get in touch.

Children who learn magic have shown to increase their levels of concentration, dexterity, self-esteem and self-confidence. In a time where social interaction is more a more limited due to the pandemic, this is a small gift from Duncan to keep the young people of our country focused, excited and developing those skills the schools would have played such an integral role in helping nurture.

All magic teaching / wizard workshops are all conducted online for all children and their family across the whole Derbyshire area.

Please email magicduncan@gmail.com with the subject header FREEMAGICTRAINING to secure your 25-30 minute online magic teaching video.

We cater for all ages from 7 years old and upwards and also for a range of educational and special needs. This free, online magic teaching / wizard workshops are most suited to children and young adults but are equally suitable for adults too.

To find out more about Duncan you can find his website here: <https://www.magicduncan.co.uk>

Derbyshire Cancer Buddies

Contact : sam@derbyshirecancerbuddies.co.uk

Tel : 075476 98081



Trained Buddies provide quality assured 1-1 telephone support. People can also visit our Facebook page and those affected by cancer can interact with each other in a safe closed group environment

[Foodbanks](#)

[Money, Finance and Welfare Benefits](#)

[Housing](#)

[Mental Health, Emotional wellbeing, Staying active](#)

[Domestic Abuse](#)

[Sexual Abuse](#)

[Safeguarding](#)

[Parental Support](#)

[Education](#)

[Employment/ Training](#)

[Community Support](#)

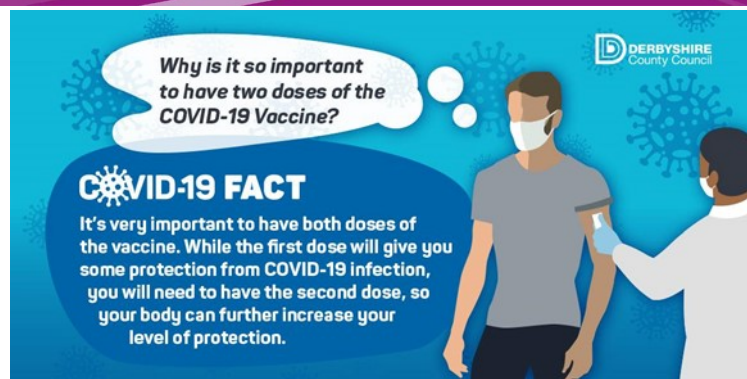
[Addiction Support](#)

[Support for Children and Young People.](#)

[Volunteering](#)

[Any other Information](#)

[Online Directories](#)



British Sign Language Pandemic Programs for Derbyshire

A new initiative to encourage more members of the public to take up sign language as an extra language and skill, is now available to residents of Derbyshire.

The Signs4Life scheme is to help people to communicate and engage with children and adults who may be hard of hearing.

Tabassum, Signs4Life partnerships officer, explains "There are more than nine million hard of hearing people registered in the UK. We have already worked with social workers, housing staff, teachers, the local NHS, and Royal Mail. We wanted to open our programs to the general public, who might also have an interest in learning sign language, especially now that many people have been stuck at home during a third lockdown. We are offering a free 6-week BSL program, which you can enjoy and access from the comfort of your homes, delivered through Zoom".

Signs4Life is leading efforts towards a society in which people with disabilities have full access and are working to raise the public and political awareness of disability provision.

For more details on the free community program for Derbyshire, starting in June, book via the website for "The Hotpots" group, starting on Friday 11 June 2021 signs4life.org/in-the-community/